

HOW CAN I BE INVOLVED?

- Attend the meeting on October 1st to learn more about the project.
- Participate in community meetings and provide input about the shelter operations and the housing development.
- Work with Community Development, Police, Fire, Code Enforcement to monitor the site and report any complaints.
- Volunteer at the shelter or housing site to assist in providing services.

JOIN US FOR OUR COMMUNITY MEETING



OCTOBER 1, 2018

6:30PM-7:30PM

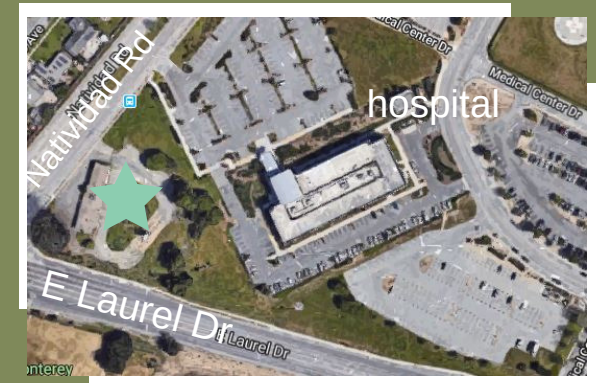
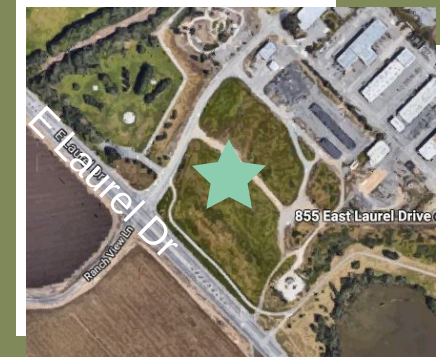
FIRST TEE MONTEREY COUNTY

1551 BEACON HILL DR,
SALINAS CA 93905

Contact us for any addition questions:
831-775-7387

FREQUENTLY ASKED QUESTIONS: YEAR ROUND HOMELESS SHELTER & HOUSING

855 E. Laurel Dr.
1220 Natividad Rd.



WHY DO WE NEED A YEAR ROUND HOMELESS SHELTER?

- According to the 2017 Monterey County Homeless Census, there are 1,361 Salinas residents experiencing homelessness.
- 56% of all homeless residents in Monterey County are located in Salinas.
- A year round shelter is critical to helping homeless residents transition into housing.
- The housing development at 1220 Natividad will provide much needed housing for those staying at the shelter.

WHY WERE THESE SITES SELECTED?

- These sites are the only vacant and adequately sized locations on county or city property that meet the zoning requirements for a homeless shelter.
- Consistent with national best practices, the shelter would be centrally located near transportation and health services.

WILL THIS IMPACT MY NEIGHBORHOOD?

- The County/City is committed to working with residents and stakeholders to ensure shelter operations are compatible with the surrounding community.
- To minimize potential impacts, the shelter operator will be required to provide:
 - security
 - transportation for shelter residents
 - storage for resident possessions
 - ongoing site maintenance
- Since opening in 2017 there have been no complaints at the existing warming shelter at 111 W Alisal.

HOW WILL THIS BE FUNDED?

- The State has allocated \$12.5 million to San Benito and Monterey Counties for homeless services through the Homeless Emergency Aid Program (HEAP).
- The County and City are proposing to use HEAP to fund the construction and operation of the shelter.
- HEAP funding must be spent by June 2021, requiring the County/City to act quickly.

WHO WILL UTILIZE THIS SHELTER?

We expect the shelter residents will be similar to those staying at 111 W Alisal. There are a large number of families with children, single women, and people seeking temporary emergency shelter at the current location.

Shelter residents in the month of August 2018:

- 72 residents per night on average
- 31% children
- 37% men
- 32% women

226 residents of the 288 total stayed 30 days or less at the shelter.

WHAT IS THE VISION FOR THIS SHELTER?

The new shelter will:

- Be approximately 10,000 Sq Ft with 80-100 beds and slightly larger than the existing shelter.
- Operate year round and provide supportive services and housing. navigation for men, women, and families.
- Include onsite shower, kitchen, and laundry facilities unlike the existing shelter.